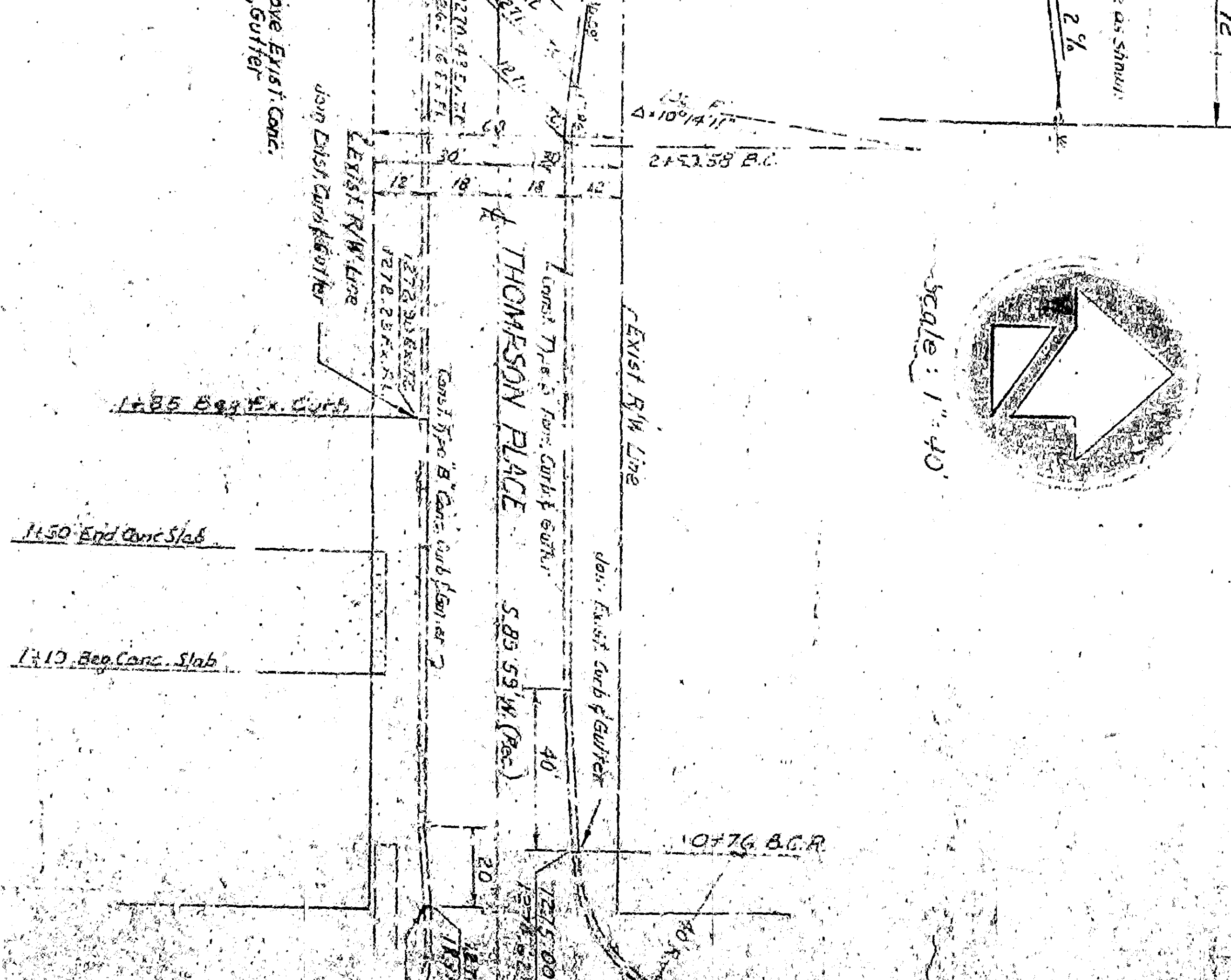
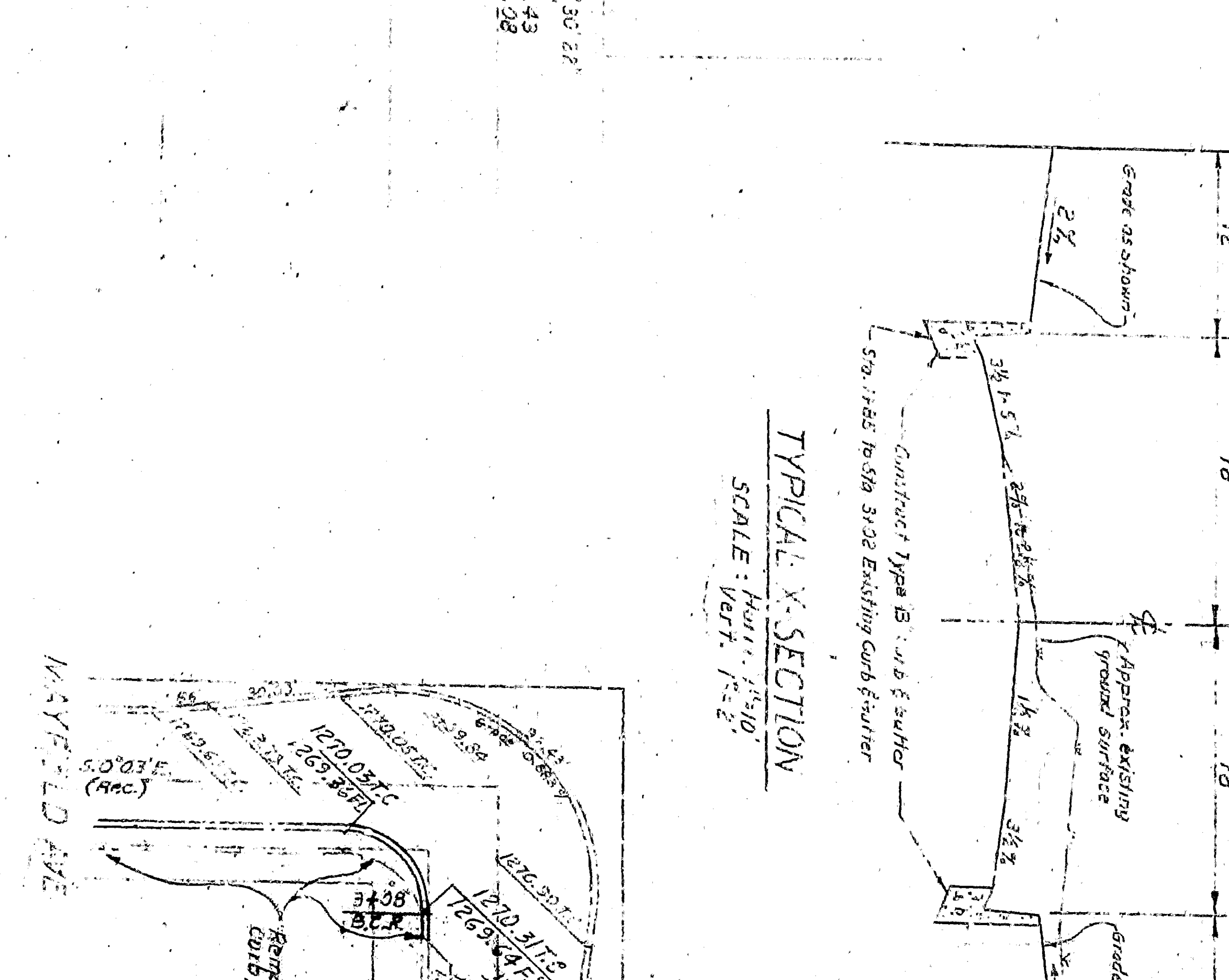
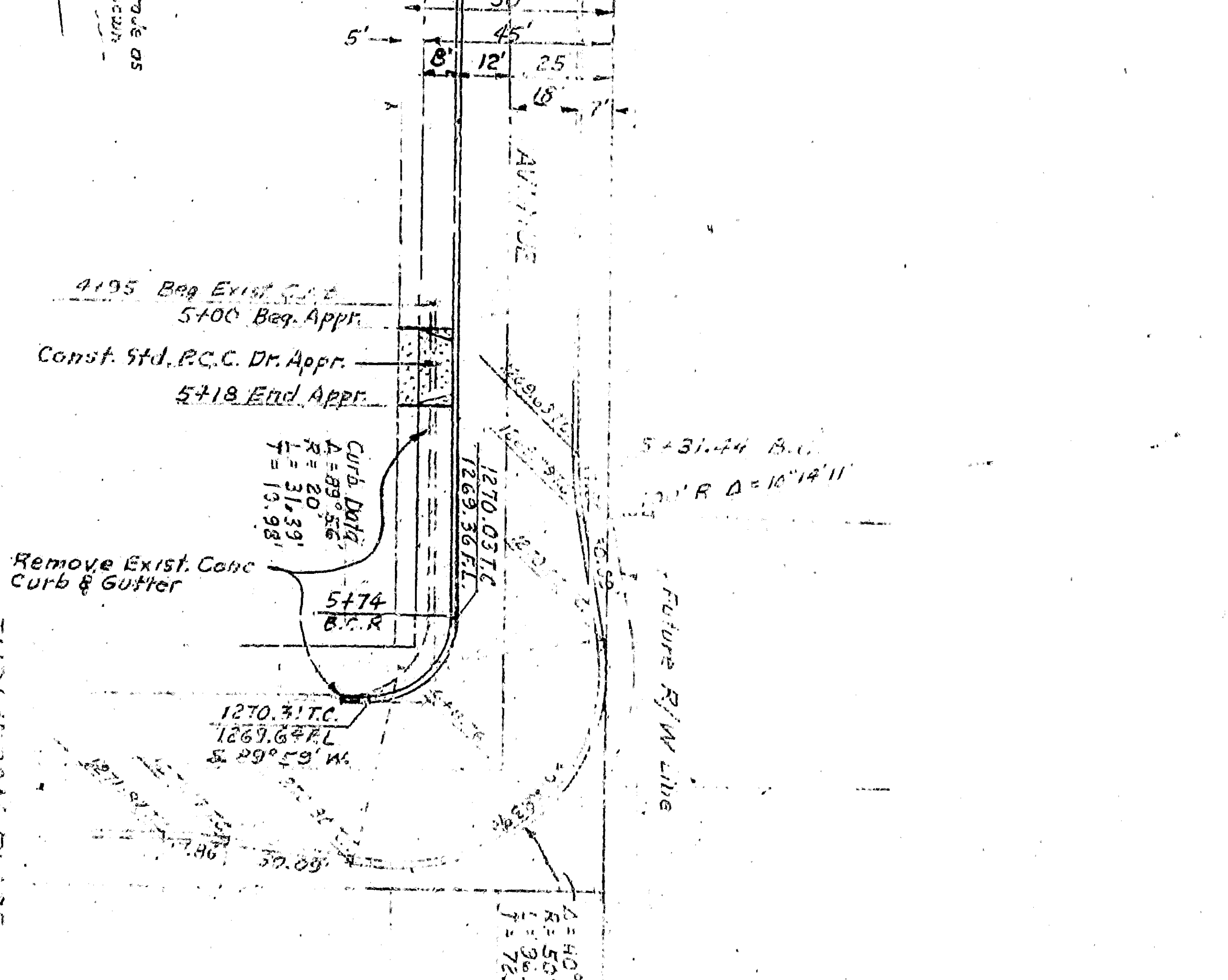
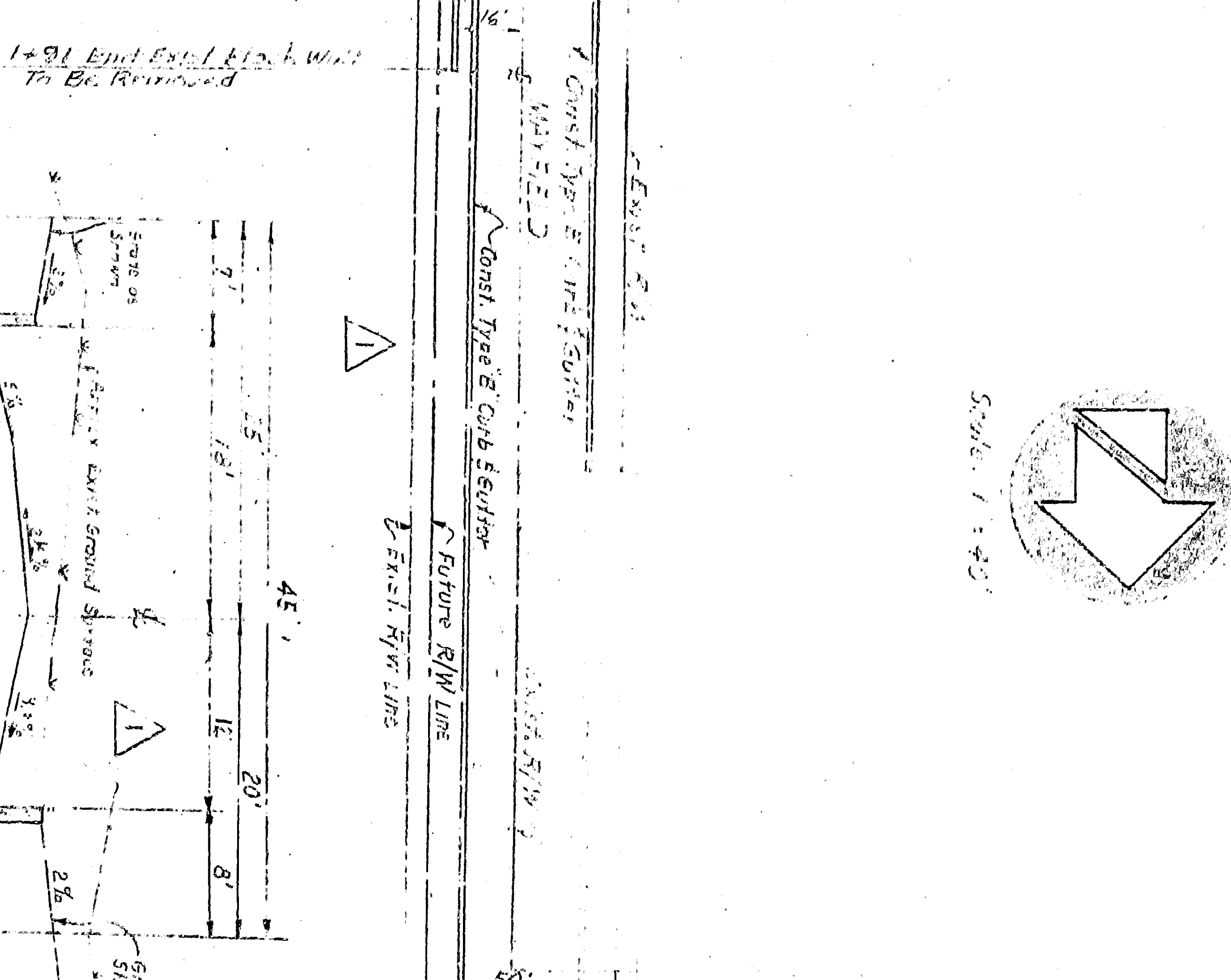
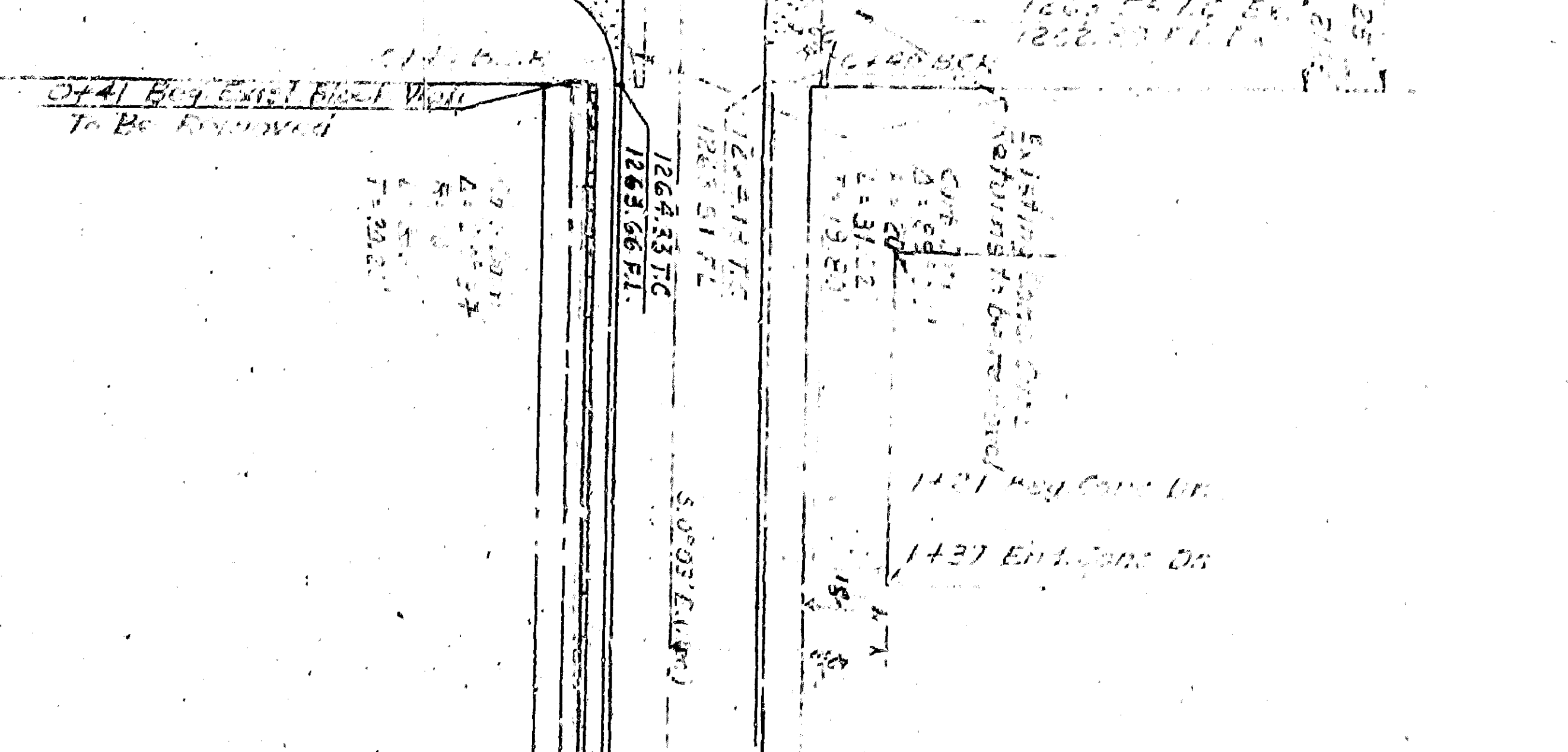
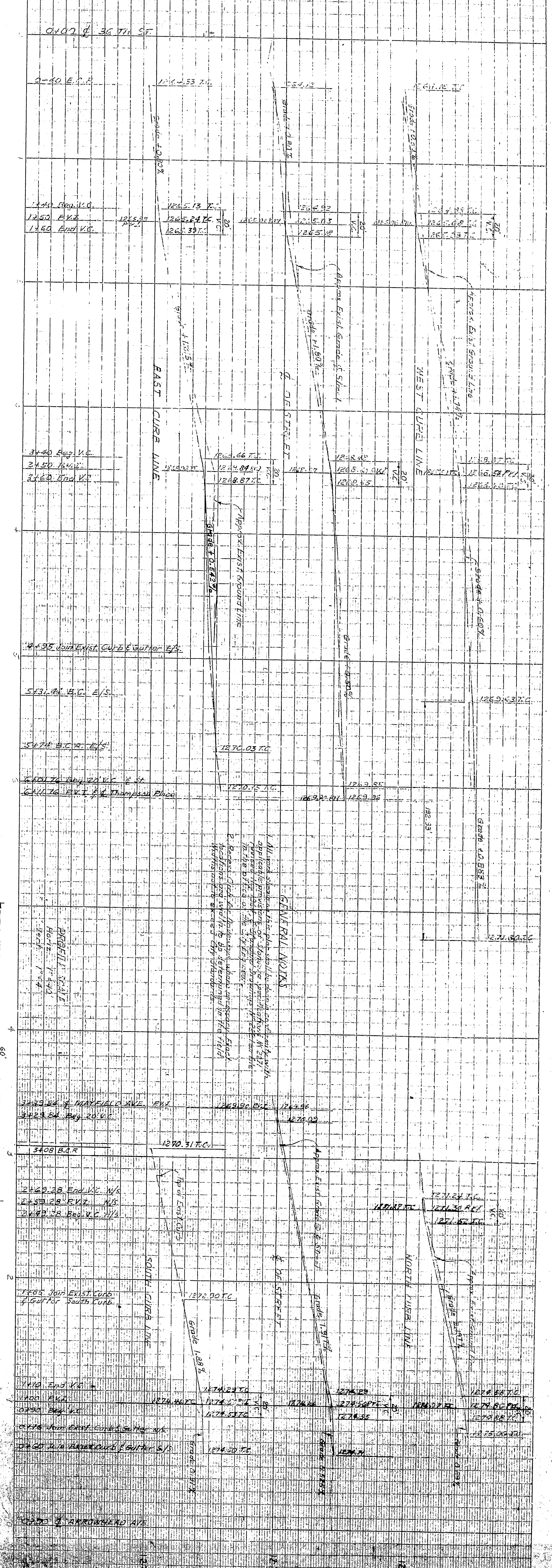


36 TH ST.



ARROWHEAD AVENUE



REV. NO.	DESCRIPTION	DATE
1	Revised East Curb & Gutter; Improved Street R/W and Curb.	10/1/23
2	As Shown	10/1/23

APPROVED: [Signature]

DESIGNED BY: [Signature]

CITY OF SAN BERNARDINO

DEPARTMENT OF ENGINEERING

THE CITY ENGINEER

3333

DRAWING NO. - DRAWN BY: [Signature]

DATE: 10/1/23

PROJECT: IMPROVEMENTS TO ARROWHEAD AVENUE

THOMPSON PLACE FROM MASSIE ROAD TO ARROWHEAD AVENUE

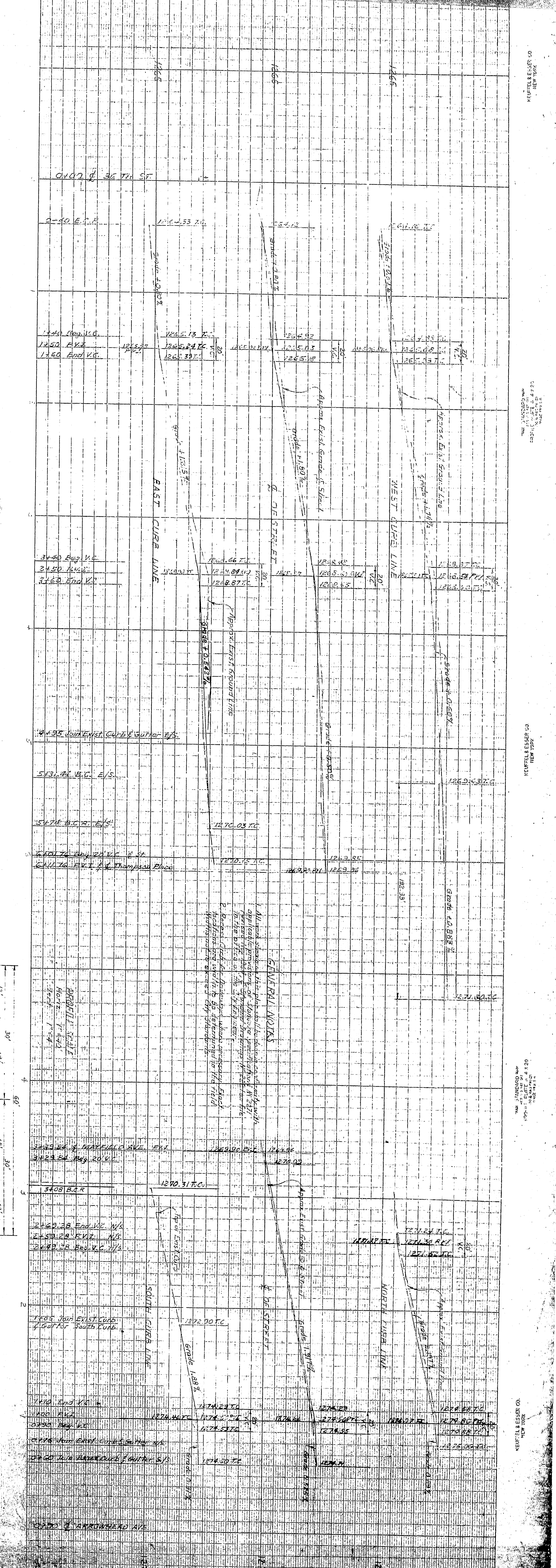
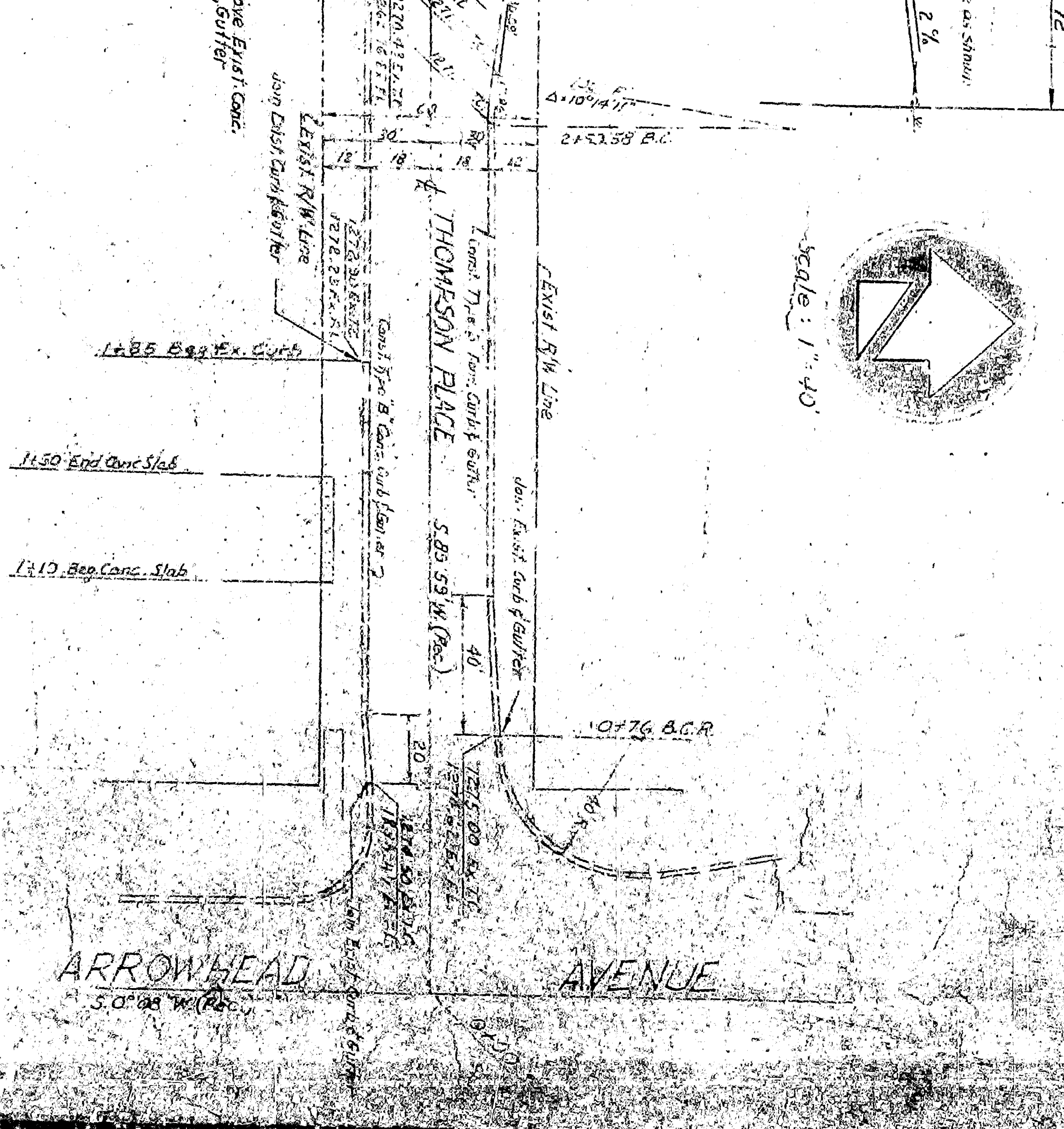
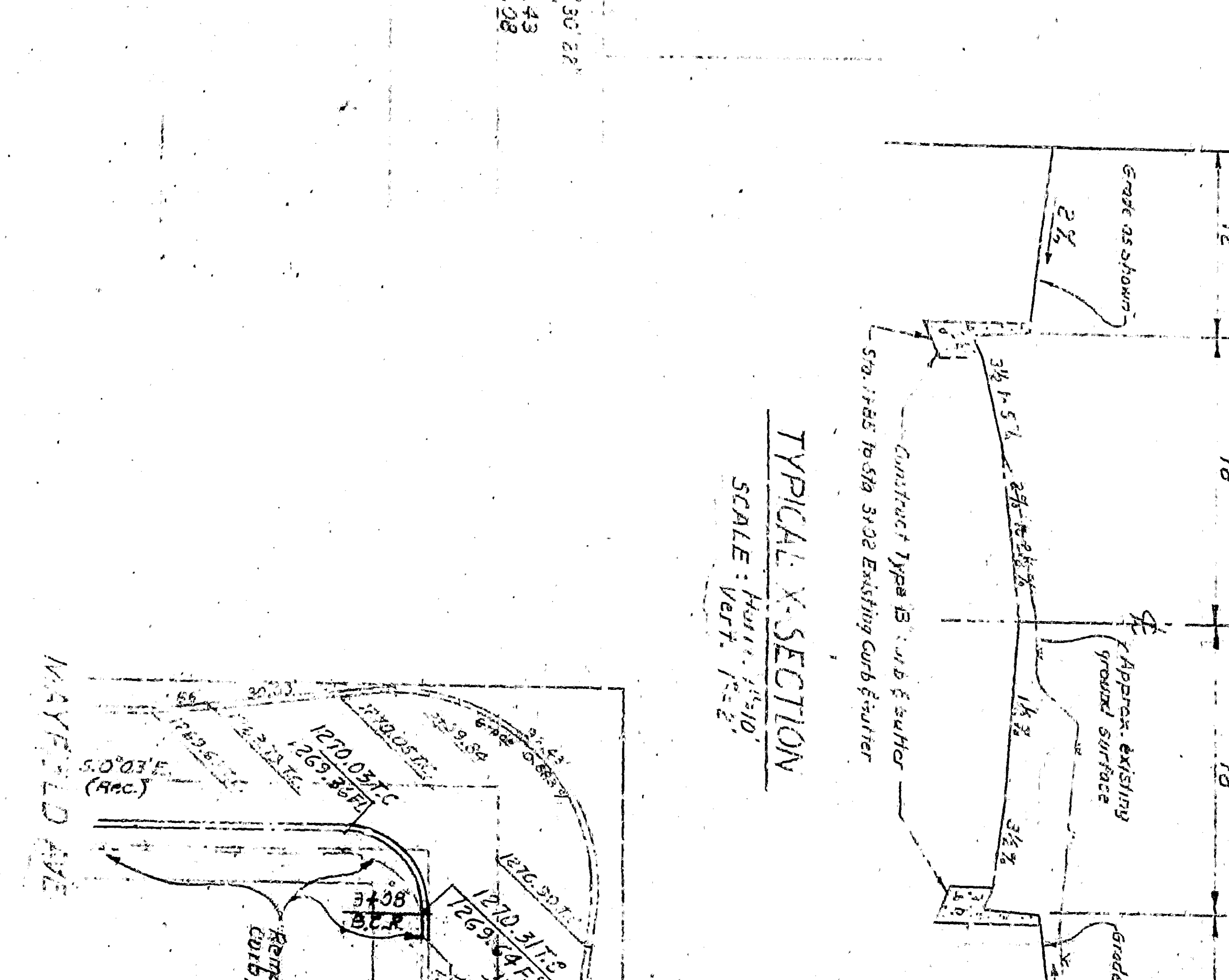
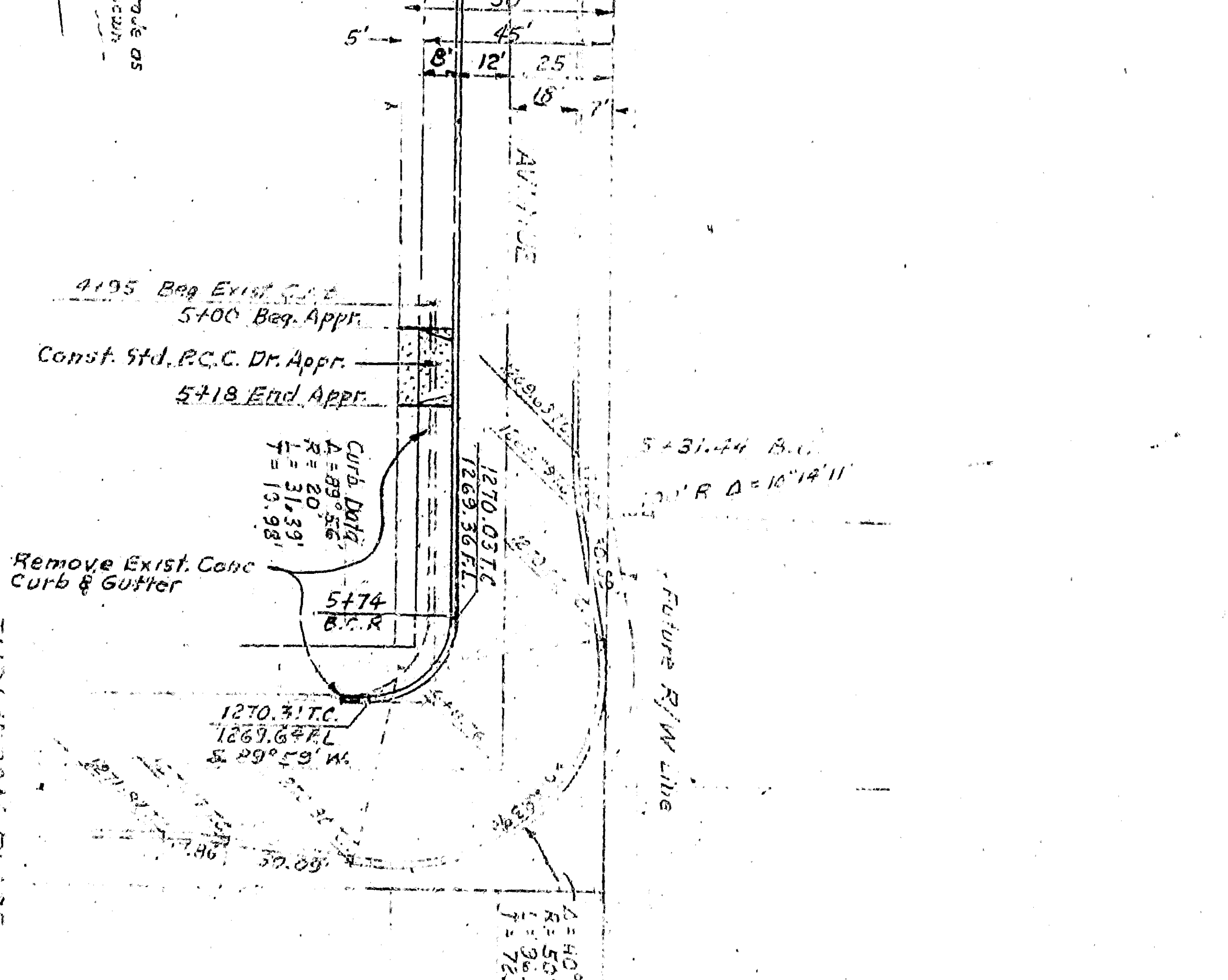
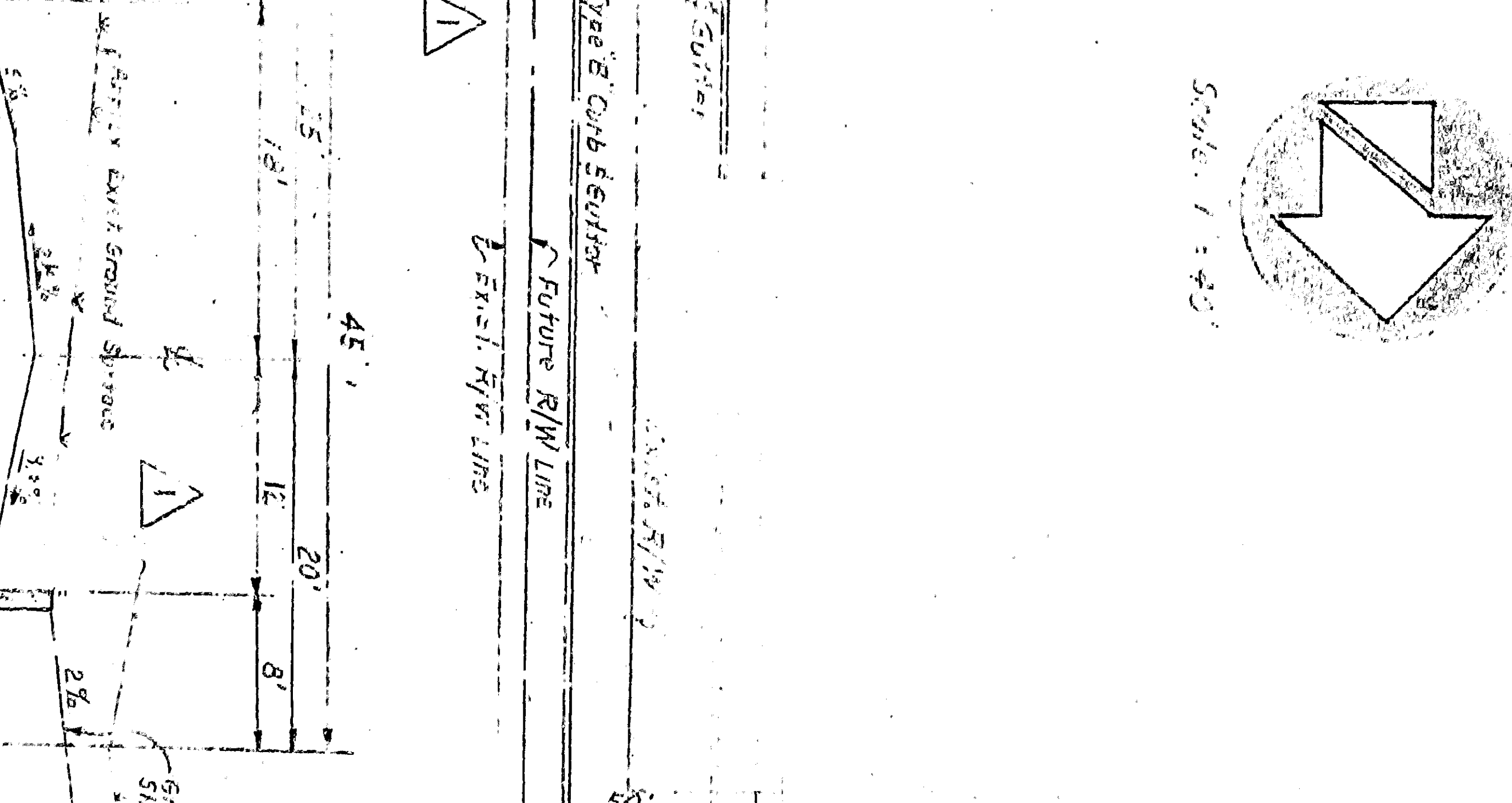
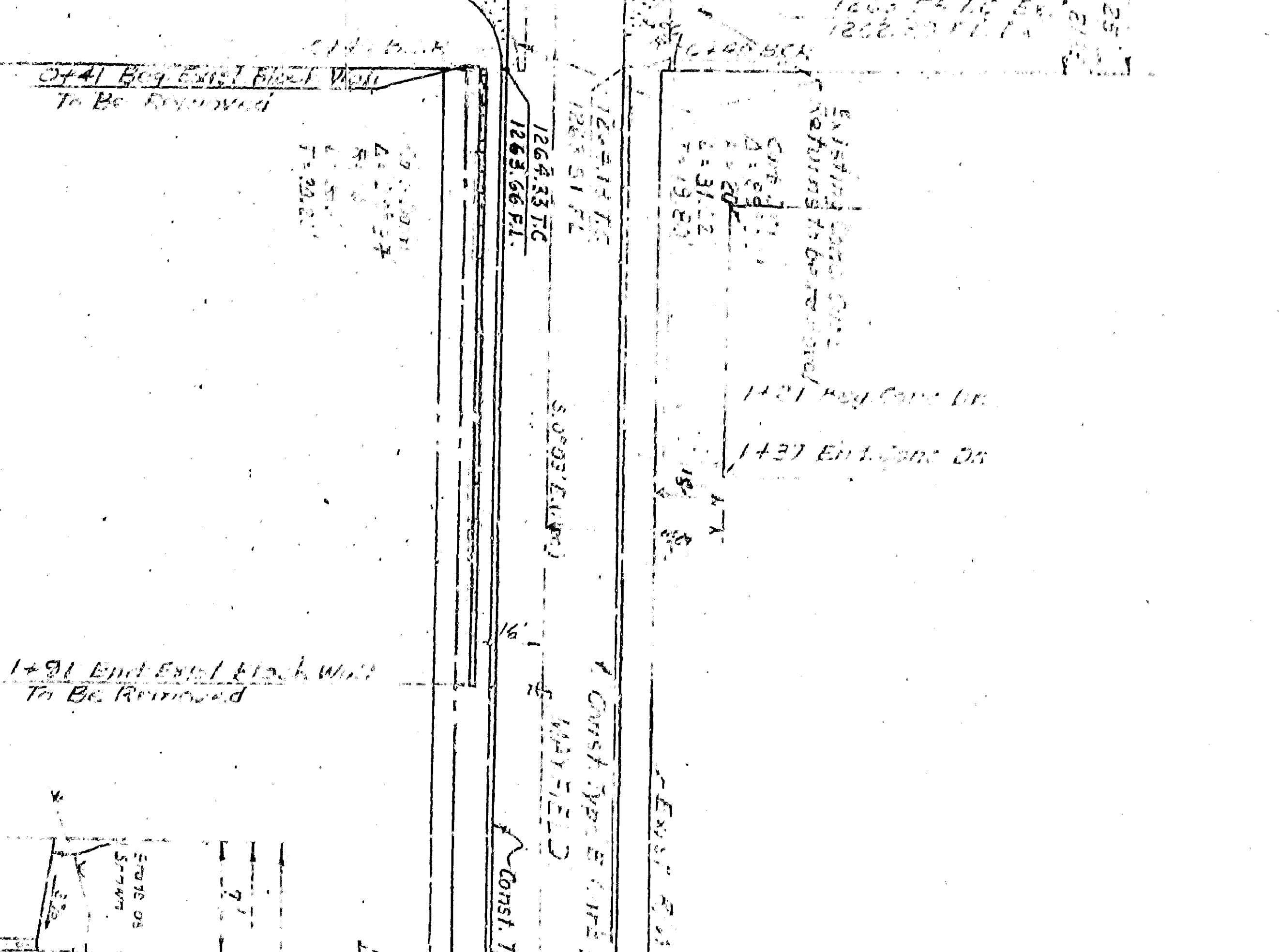
SHEET 1 OF 2

RENTALS & SUPPLY CO. NEW YORK

RENTALS & SUPPLY CO. NEW YORK

RENTALS & SUPPLY CO. NEW YORK

36 TH ST.



REV. NO.	DESCRIPTION	DATE
1	Revised East Curb and Gutter; Improved Street R/W and Curb.	10/27/23
2	As Shown	11/15/23

APPROVED: [Signature]

DESIGNED BY: [Signature]

CITY OF SAN BERNARDINO  
DEPARTMENT OF ENGINEERING  
STREET IMPROVEMENTS  
MAYFIELD AVENUE - 1/4 MILE TO 3/4 MILE  
THOMPSON PLACE - FROM MASSIE ROAD  
ARROWHEAD AVENUE

3333  
DRAWING NO. - DRAWN BY: [Signature]  
CHECKED BY: [Signature]  
SCALE: 1" = 40'

3333  
SHEET 1 OF 2

REDFIELD CO.  
NEW YORK

REDFIELD CO.  
NEW YORK

REDFIELD CO.  
NEW YORK

REDFIELD CO.  
NEW YORK

REDFIELD CO.  
NEW YORK